

# APS, APPLICATIONS & TIMELINE:

## APS, Applications & Timeline: The Complete Germany Study Process Explained for Indian Students



One of the biggest reasons students struggle with Germany is not eligibility—it's the **process**.

Unlike countries where applications are straightforward, Germany requires:

- Multiple steps
- Strict documentation
- Long timelines
- Zero tolerance for errors

And the most misunderstood part is:

### [APS certification and planning timeline](#)

This article breaks down the **entire process step-by-step**, so you understand what actually happens—and where most students go wrong.

#### **Step 1: Understanding APS Certification**

APS (Academic Evaluation Centre) is a mandatory process for Indian students applying to Germany.

##### **What APS Does**

It verifies:

- Academic documents
- Degree authenticity
- Academic eligibility

##### **Timeline**

4–10 weeks  
(sometimes longer)

##### **Biggest Mistake**

Applying to universities  
without APS

# GERMANY VS UK VS CANADA VS DUBAI

## Which Study Destination Is Right for You?

Students often ask:

“Which country is best for studying abroad?”

The honest answer is: There is no best country—only the right fit.

This article compares Germany with other popular destinations to help you decide.



### Germany vs UK

Factor	Germany	UK
Tuition fee	Low	High
Duration	2 Years	1 Year
Flexibility	Low	High
Process	Complex	Simple

**When Germany is better**  
 Budget-sensitive students  
 Technical profiles

**When UK is better**  
 Faster outcomes  
 Flexible profiles

## Step 2: Shortlisting Universities

Germany does not work like “top 10 lists”.

Shortlisting depends on:

- Academic match
- Course structure
- Entry requirements
- Intake availability

### Common Mistake

Students choose universities based on:

Rankings  
YouTube suggestions  
Friends' choices

Instead of:

Course fit  
Admission probability

## Step 3: Application Process

Applications happen through:

- University portals
- Uni-Assist (for many universities)

### Key Requirements

- SOP
- Academic transcripts
- IELTS/TOEFL
- APS certificate
- CV

### Reality

Germany is **documentation-heavy**.  
Even small mistakes can lead to rejection.

## Step 4: Offer & Admission

Unlike other countries:

- Offers may take time
- Communication may be minimal
- Rejections may not always be explicit

### What Students Misunderstand

Silence ≠ acceptance  
Delay ≠ approval



www.reall

## Germany vs Canada

Factor	Germany	Canada
PR Path	Limited	Strong
Cost	Lower Tuition	High Cost
Job Market	Technical	Broad

**When Germany is better**  
 Cost-conscious students  
 Engineering focus

**When Canada is better**  
 Immigration-focused students

## Germany vs Dubai

Factor	Germany	Dubai
Cost	Lower Tuition	Moderate
Process	Complex	Easy
Career	Technical	Competitive

**When Germany is better**  
 Long-term technical careers

**When Canada is better**  
 Faster entry  
 Business-focused students

## The Biggest Decision Mistake

Choosing a country based on:

- Popularity
- Friends
- Social media

## A Better Decision Framework

Ask:

- What is my budget?
- What is my academic strength?
- What career am I targeting?
- How much risk can I take?

### Final Thought

The right country is not the most popular one.

It is the one where: **your profile, goals, and reality align.**

## Post-Study Work Visa

Germany allows: 18 months to find a job

But: Time alone does not guarantee success.

## Salary Expectations

Starting salaries vary:

- €40,000–€65,000 (technical roles)
- Lower for non-technical fields

## Biggest Mistakes Students Make

Assuming jobs are easy  
Ignoring language  
Delaying internships  
Choosing wrong course

## Who Succeeds in Germany

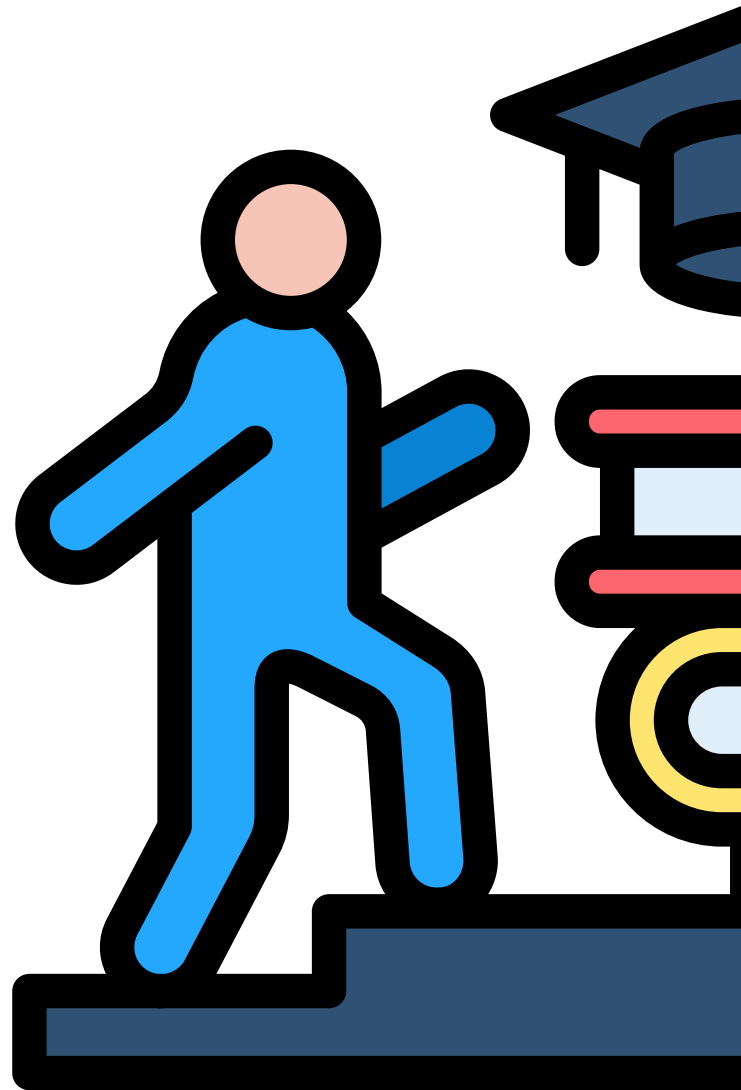
Students who:

Plan early  
Build skills  
Adapt culturally  
Stay consistent

## Final Thought

Germany offers opportunity—but only for those who:

**prepare beyond academics**





### Step 5: Blocked Account

Students must show:

€11,000–€12,000/year

This proves financial ability.

### Step 6: Visa Process

Visa approval depends on:

- Documentation
- Financial clarity
- Profile consistency

### Step 7: Timeline Overview

Ideal Planning Timeline

#### Step

APS

Applications

Admission

Visa

#### Timeline

2–3 months

2–4 months

1–3 months

1–2 months

### Final Reality Check

Germany is not difficult—but it is:

Structured

Time-sensitive

Documentation-driven

